

600



Hi-res, data-secure
direct-to-card printing.



MAGiCARD[™]
by  BRADY

600

Security, compliance and peace of mind: built in.

A world-class ID printing solution delivering high print speeds, stringent security and the finest detail, the Magicard 600 integrates seamlessly with existing infrastructure to deliver secure processing of ID credentials.

Wi-Fi connectivity - as standard via supplied dongle, – IEEE 802.11b/g/n compliant with connection of speeds up to 300Mbps. Supports WPA and WPA2 encrypted connection (access point dependent).

An eye for detail - capable of printing at 600 x 300 dpi resin only, the Magicard 600 allows you to print readable text at small font sizes (≥ 5 point).

Superior quality - The Magicard 600 offers a wide colour spectrum so printing is more vibrant and colour-rich for a truer representation of the subject.

Plug and play - to get you up and running quickly and easily, the Magicard 600 integrates with existing network infrastructure 'out of the box' via USB, minimising set-up time and requiring little technical knowledge.

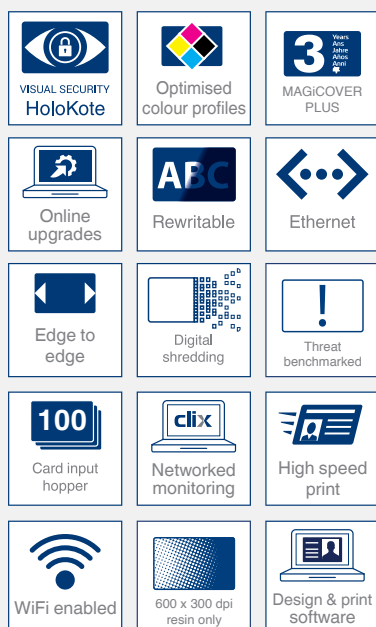
High speed - each full colour, single-sided card, with HoloKote, can be printed in under 20 seconds giving the Magicard 600 the ability to print up to 190 cards per hour.

Updates and upgrades - The Magicard 600 is easy to keep up-to-date with the latest features and fixes as and when they're available.

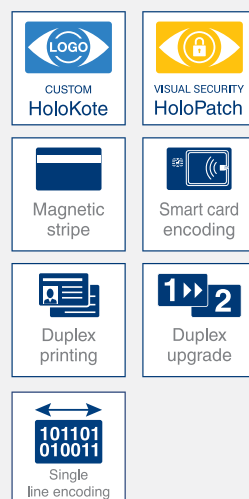
Specialist Security - Digital Shredding, Threat Benchmarking, Single Line Encoding (optional).

Printer features

Standard



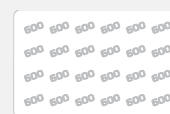
Optional



Card security options

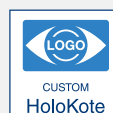
HoloKote

A standard security watermark printed across the entire card surface. The 600 HoloKote features 10 standard designs.



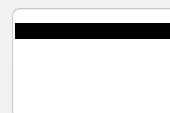
Custom HoloKote

A fully flexible and customisable secure watermark printed across the entire card surface.



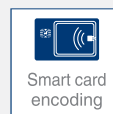
Magnetic stripe

The 600 can be specified with ISO standard 7811 compatible HiCo encoding of magnetic stripe cards.



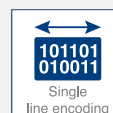
Smart card encoding

Smart card encoding options: Contact chip, Mifare®, Desfire®, iClass®.



Single line encoding

Allows for data packaged at source to be sent securely from the datacentre to be unpacked at its destination and used by the printer's application.





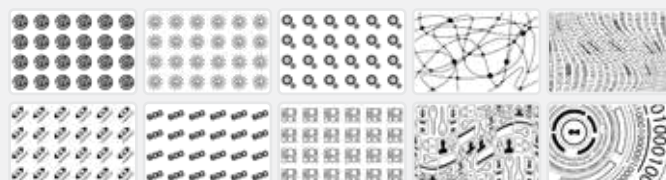
Security

Digital shredding™ - once data has been used for the print job, it is fragmented, rendering it irrecoverable, helping to ensure the Magicard 600 is not a repository for data.

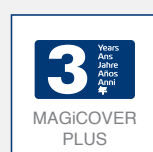
Threat benchmarked - we run security scans against the comprehensive vulnerability assessment tool, Nessus Pro, one of the most widely deployed security technologies in the world and push regular updates to the device, ensuring that the printer software and associated system configuration conform to the highest levels of security.

Single Line Encoding - Many enterprises hold sensitive and personal information securely within a protected datacentre. In order to comply with data protection regulations Single Line Encoding allows for data packaged at source to be sent securely from the datacentre to be unpacked at its destination and used by the printer's application.

Anti-fraud - the Magicard 600 has the ability to print a standard or customisable HoloKote watermark on every card. Each device has the built-in ability to receive up to 10 anti-fraud customised HoloKotes direct to the printer via Magicard's web tool.



Warranty**



The Magicard 600 is backed by the best warranty in the industry. The fully comprehensive three-year MagiCover Plus package includes printhead cover and a hot-swap loaner service. Users will never be without their printer and always have full access to the global Magicard technical support team.

**Available in the UK, EU, North America and other selected territories. Covers poor workmanship, manufacturing defects and component failure - conditional with use of approved Magicard consumables and observance of correct routine maintenance and frequency.

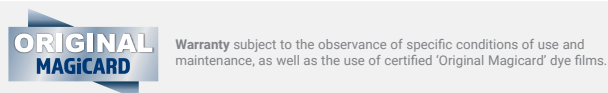
600


● Standard ● Option

Printer specifications

Print speed* (single sided)	
Colour	Up to 190 cards per hour
Monochrome	Up to 750 cards per hour
Card capacities	
Card input	100 (optional 200 card input available)
Card output	70
Visual security	
Standard HoloKote watermark (x10)	●
Custom HoloKote watermark	●
HoloPatch cards	●
Electronic security	
ISO 7811, JIS2 magnetic stripe	●
ISO 7816, EMV contact chip	●
MIFARE®, DESFire®, iClass®, others	●
Single line encoding	●
Warranty**	
3-year MagiCover Plus	
Including "no quibble" printhead replacement and loan printer /hot swap.	
Optional 1-year extension.	
Print technology	
Dye sublimation/rewritable. 600 x 300dpi resin only.	
Feed system	
Manual/automatic	
Upgrade	
Single to double-sided	3652-5052E ●
Connectivity	
USB	●
Ethernet	●
Wifi	●
Compatibility	
Windows 11: 21H2, 22H2.	
Windows 10: 21H1, 21H2, 22H2 (32 and 64 bit).	
Windows Server: 2022, 2019 (1809), 2016 (1607).	
macOS latest version, Linux with CUPS support.	
Dimensions	
211.5 W x 248 H x 475.5 D mm / 8.3 W x 9.8 H x 18.9 D inches	
Weight	
4.7 kg / 10.4 lb	
Operating environment	
Sheltered office - 10°C - 30°C / 50°F - 85°F	

*Print speeds are approximate and depend on card design/print settings. **Available in North America, EU and other selected territories. Elsewhere a minimum of 1 year limited depot warranty. Our warranties cover poor workmanship, manufacturing defects and component failure – conditional with use of approved MagiCard consumables and observance of correct routine maintenance and frequency.



 **MagiCard Ltd - Headquarters and manufacturing centre**
Hampshire Road, Weymouth, Dorset DT4 9XD,
United Kingdom
Tel: +44 (0)1305 47 00 00
Email: info@magiCard.com

www.magiCard.com

Consumables

Dye film		Part No.
MagiCard 600 YMCKO dye film 300 images		MB300YMCKO/2*
MagiCard 600 YMCKO dye film 300 images		MB300YMCKO/3*
MagiCard 600 YMCKO dye film 200 images		MB200YMCKO/2*
MagiCard 600 YMCKO dye film 200 images		MB200YMCKO/3*
MagiCard 600 YMCKOK dye film 250 images		MB250YMCKOK/2*
MagiCard 600 YMCKOK dye film 250 images		MB250YMCKOK/3*
MagiCard 600 KO film 600 images		MB600KO/2*
MagiCard 600 KO film 600 images		MB600KO/3*
MagiCard 1000 continuous resin monochrome film 1000 images		MA1000K
Card types/thickness		
CR80/CR79 PVC ISO blank cards, HiCo magnetic stripe, smart cards, self-adhesive, rewritable and HoloPatch® cards. 0.51mm to 1.02mm / 0.020" to 0.040".		
Cleaning supplies		
Cleaning kit - 5 cleaning cards, 1 pen.		3633-0053
Cleaning roller kit - 5 cleaning rollers, 1 metal roller bar.		3633-0054

Variants

	Part No.
MagiCard 600 Uno	3652-5001/2*
MagiCard 600 Uno	3652-5001/3*
MagiCard 600 Uno Mag	3652-5002/2*
MagiCard 600 Uno Mag	3652-5002/3*
MagiCard 600 Uno Smart	3652-5003/2*
MagiCard 600 Uno Smart	3652-5003/3*
MagiCard 600 Uno Smart SLE	3652-5005/2*
MagiCard 600 Uno Smart SLE	3652-5005/3*
MagiCard 600 Uno Mag Smart	3652-5004/2*
MagiCard 600 Uno Mag Smart	3652-5004/3*
MagiCard 600 Uno Mag Smart SLE	3652-5006/2*
MagiCard 600 Uno Mag Smart SLE	3652-5006/3*
MagiCard 600 Duo	3652-5021/2*
MagiCard 600 Duo	3652-5021/3*
MagiCard 600 Duo Mag	3652-5022/2*
MagiCard 600 Duo Mag	3652-5022/3*
MagiCard 600 Duo Smart	3652-5023/2*
MagiCard 600 Duo Smart	3652-5023/3*
MagiCard 600 Duo Smart SLE	3652-5025/2*
MagiCard 600 Duo Smart SLE	3652-5025/3*
MagiCard 600 Duo Mag Smart	3652-5024/2*
MagiCard 600 Duo Mag Smart	3652-5024/3*
MagiCard 600 Duo Mag Smart SLE	3652-5026/2*
MagiCard 600 Duo Mag Smart SLE	3652-5026/3*

(* Region codes; /2 - USA; /3 - Europe, Japan, South Korea and Australasia)

Online upgrades

Online double-sided upgrade

Upgrade the MagiCard 600 Uno to the MagiCard 600 Duo. Delivered online through the driver interface.

Online Custom HoloKote upgrade

Grid or full card pattern. Up to ten custom designs can be added through the driver interface using the online HoloKote tool.

MagiCard is a registered trademark of MagiCard Ltd. All other trademarks, brand names, or product names belong to their respective holders.
The information contained in this document reflects the current state of design and we reserve the right to change the specification without notice or obligation.

Find your nearest
dealer here:



Issue: 2.00